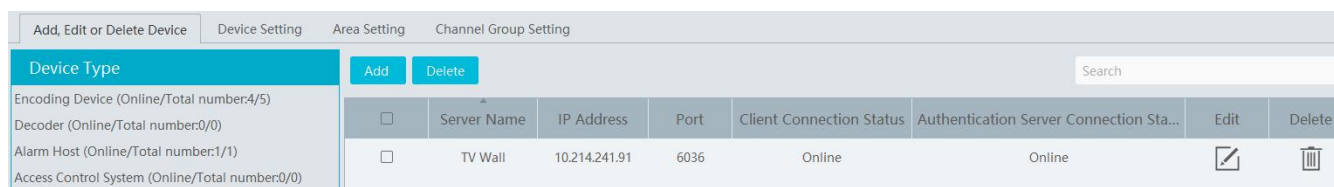


1 TV Wall

1.1 Add TV Wall Server

Go to Home → Add, Edit or Delete Device → TV Wall Server interface as shown below. There is a default TV wall server. Please check whether it is online.



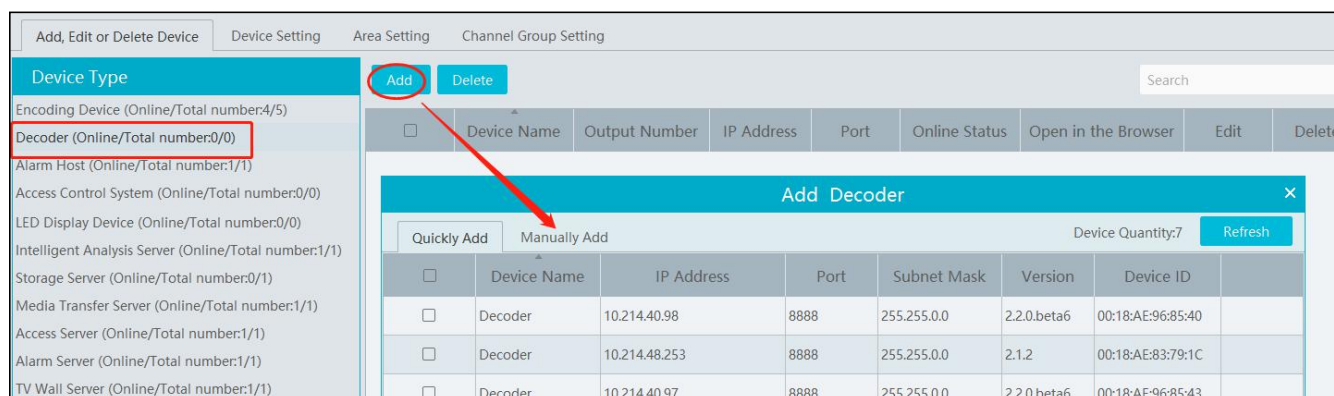
Device Type	Server Name	IP Address	Port	Client Connection Status	Authentication Server Connection Sta...	Edit	Delete
Encoding Device (Online/Total number:4/5) Decoder (Online/Total number:0/0) Alarm Host (Online/Total number:1/1) Access Control System (Online/Total number:0/0)	TV Wall	10.214.241.91	6036	Online	Online		

An adding TV Wall window will be prompted by clicking [Add]. Click [Refresh] to quickly add the TV wall server in the same local network, or add the TV wall server by manually entering server name, IP address and port.

1.2 Add Decoder

Decoder is used to decode the video signal transmitted by the transfer server. The decoding output is a standard video signal. The decoder is necessary for decoding videos on the TV wall.

Go to Home → Add, Edit or Delete Device → Decoder interface.



Device Type	Device Name	Output Number	IP Address	Port	Online Status	Open in the Browser	Edit	Delete
Encoding Device (Online/Total number:4/5) Decoder (Online/Total number:0/0) Alarm Host (Online/Total number:1/1) Access Control System (Online/Total number:0/0) LED Display Device (Online/Total number:0/0) Intelligent Analysis Server (Online/Total number:1/1) Storage Server (Online/Total number:0/1) Media Transfer Server (Online/Total number:1/1) Access Server (Online/Total number:1/1) Alarm Server (Online/Total number:1/1) TV Wall Server (Online/Total number:1/1)	Decoder		10.214.40.98	8888				
	Decoder		10.214.48.253	8888				
	Decoder		10.214.40.97	8888				

Add Decoder							
Quickly Add	Manually Add				Device Quantity:7	Refresh	
<input type="checkbox"/>	<input type="checkbox"/>	Device Name	IP Address	Port	Subnet Mask	Version	Device ID
<input type="checkbox"/>	<input type="checkbox"/>	Decoder	10.214.40.98	8888	255.255.0.0	2.2.0.beta6	00:18:AE:96:85:40
<input type="checkbox"/>	<input type="checkbox"/>	Decoder	10.214.48.253	8888	255.255.0.0	2.1.2	00:18:AE:83:79:1C
<input type="checkbox"/>	<input type="checkbox"/>	Decoder	10.214.40.97	8888	255.255.0.0	2.2.0.beta6	00:18:AE:96:85:43

The setting steps of adding decoders are the same as adding encoding device setup (see Add Encoding Device for details).

1.2.1 Create and Connect Decoder

The decoder which needs to be connected to the platform must be the master decoder and in platform mode. Login the web client of the decoder as shown below.

Go to Basic Settings → System Settings to check the user permission and running mode of the decoder and make sure its user permission is master and its running mode is platform. Then apply the settings and restart the decoder.

Basic Settings	
Running Mode	Platform <input type="button" value="v"/>
User Permission	Master <input type="button" value="v"/>
Device Name	Decoder <input type="text"/>
MAC	00:18:AE:00:45:D1
Soft Version	2.1.3
Version Date	20210121
Kernel Version	I4R2-H5F3-H5F3
<input type="button" value="Apply"/>	

The decoder will not be online until it is bound to a TV wall. Please create a TV wall first and then bind the decoder to the TV wall. See chapter 12.3.1 for details.

Add, Edit or Delete Device									
Device Setting									
Area Setting									
Channel Group Setting									
Device Type									
Add <input type="button" value="v"/> Delete <input type="button" value="v"/>									
Search <input type="text"/>									
Encoding Device (Online/Total number:4/5)	<input type="checkbox"/>	Device Name	Output Number	IP Address	Port	Online Status	Open in the Browser	Edit	Delete
Decoder (Online/Total number:1/1)	<input type="checkbox"/>	Decoder(1)	2	10.214.48.253	8888	Online	<input type="button" value="v"/>	<input type="button" value="v"/>	<input type="button" value="v"/>
Alarm Host (Online/Total number:1/1)									
Access Control System (Online/Total number:0/0)									

1.3 TV Wall Management

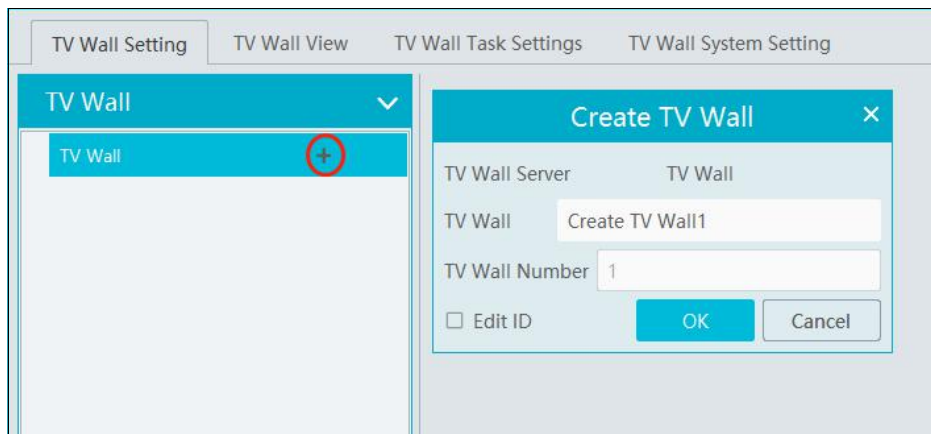
Go to Home→TV Wall Management→TV Wall Setting.

TV Wall Setting	TV Wall View	TV Wall Task Settings	TV Wall System Setting
<div style="border: 1px solid #ccc; padding: 5px;"> <p>TV Wall <input type="button" value="v"/></p> <p>TV Wall <input type="button" value="v"/></p> <p style="text-align: right;">+</p> </div>			
Decoder Output			

1.3.1 TV Wall Settings

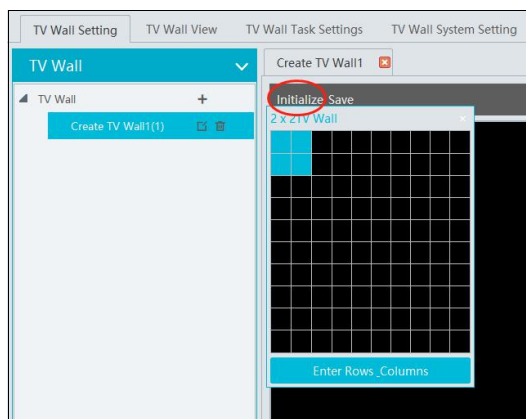
◆ Create TV Wall

Go to Home→TV Wall Management→Edit TV Wall. Select a TV wall server and then click to create a TV wall.



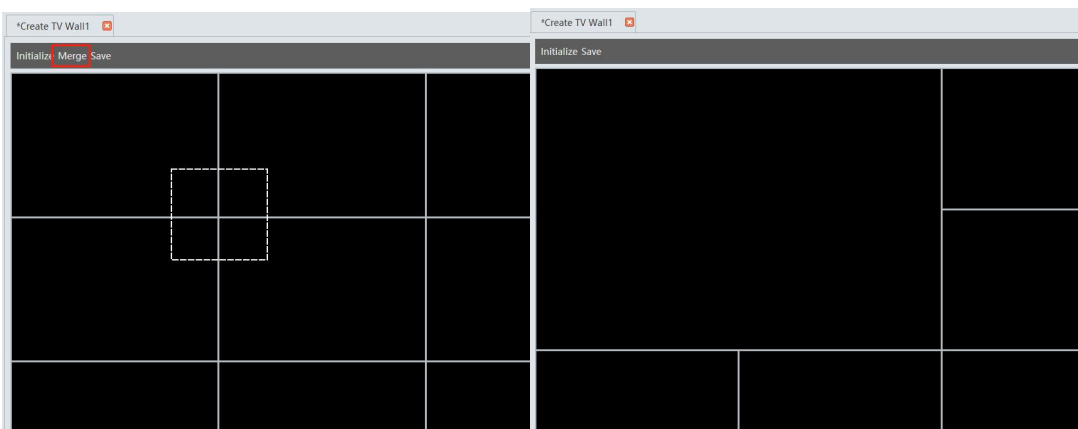
◆ Initializing

- ① Double click the created TV wall to prompt a TV wall window.
- ② Click “Initialize” to create TV wall layout



◆ Merging\Splitting

Merging: drag on the screen and then release. The “Merge” button will be shown. Click it to merger these small windows.



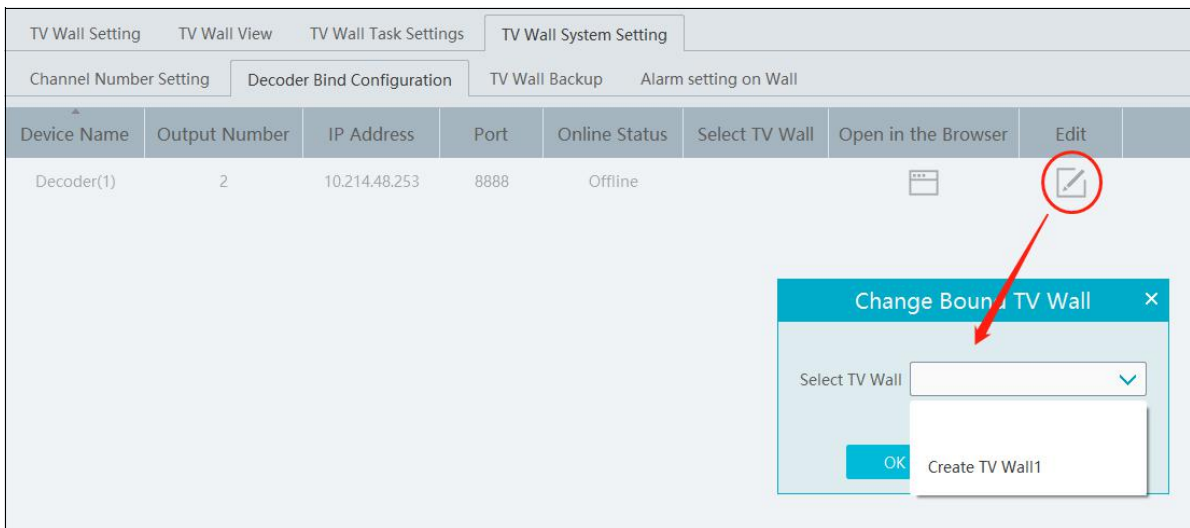
Splitting: select the merged window and click “Split” to restore the window to the previous status.



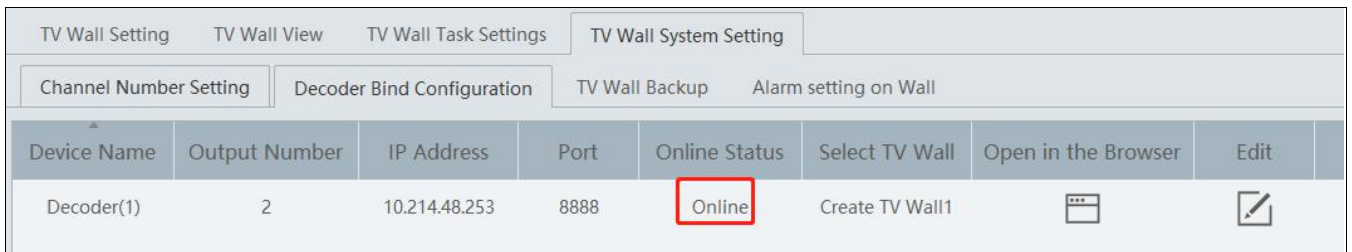
The online decoder displayed in the decoder output list is the binding decoder of this TV wall. Drag the outputs to windows on the right in sequence and then click “Save” to save the settings.

- **Decoder Binding**

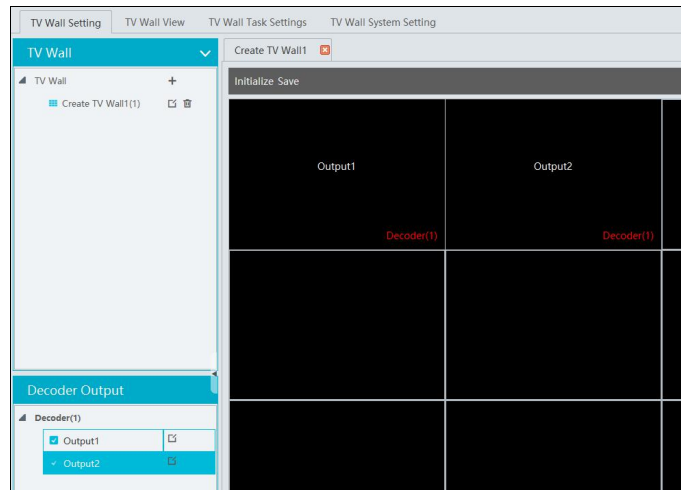
Go to Home→TV Wall Management→TV Wall System Setting interface as shown below. In this interface, decoder bind can be set up. Decoder bind configuration: modify the binding state between decoder and TV wall.




Click to change bound TV Wall. After the decoder is bound to the TV Wall, the online status will be “Online”.

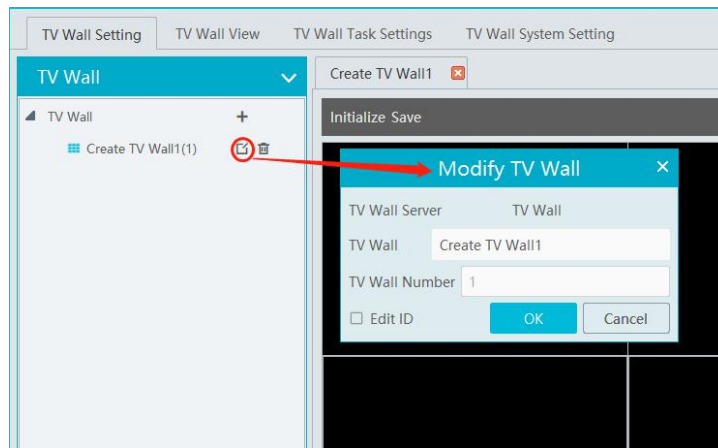


Return to the decoder management interface as shown above. The online status of the decoder indicates that the decoder is successfully bound with TV wall. Go to TV Wall Setting interface as shown below. Drag the outputs of the decoder to the window on the right and save them to complete output bind.



Modify TV Wall:

Click  next to the TV wall name and then modify the TV wall information as needed.




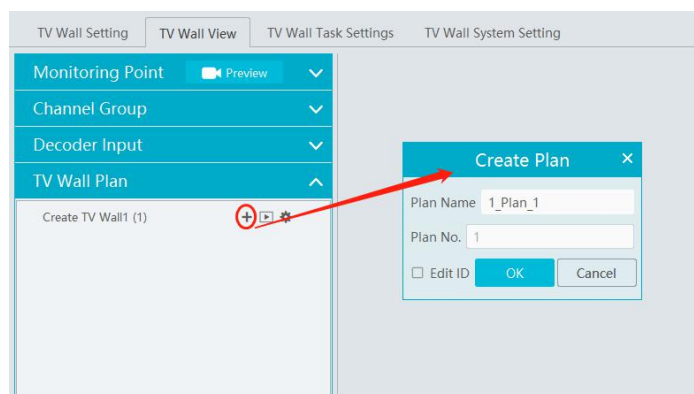
Check “Edit ID” to modify the ID number of the TV wall. Note that the ID number of the TV wall cannot be repeated.

1.3.2 TV Wall View

◆ Create Plan

Go to Home → TV Wall Management → TV Wall View → TV Wall Plan.

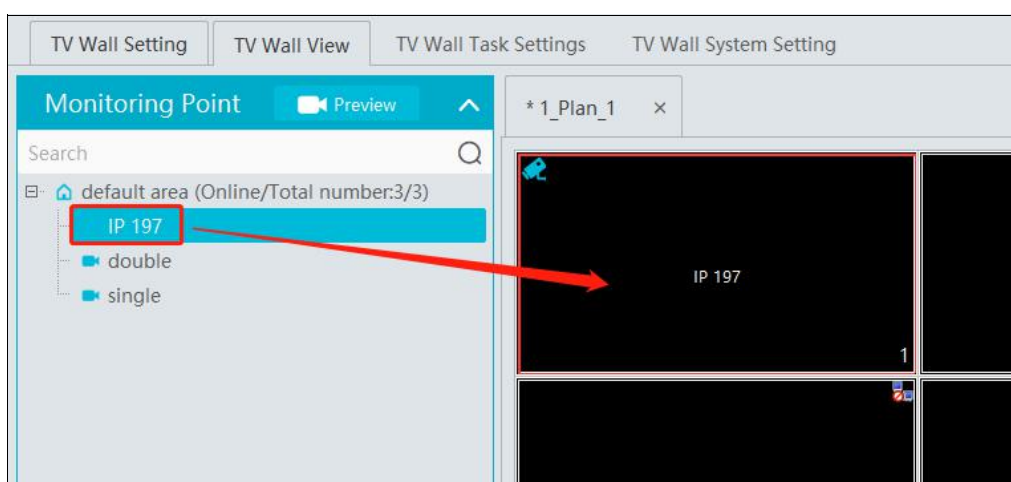
Click  beside the TV wall name to create the TV wall plan name.



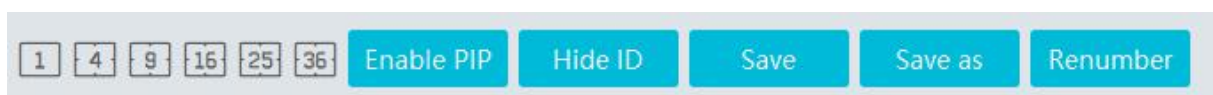
◆ Configure Plan

Double click the plan name to show the plan.

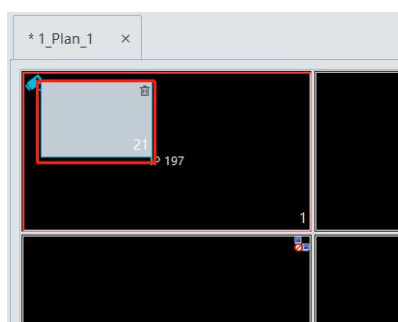
Drag the monitoring points to the corresponding window respectively to decode image.



◆ Toolbar Menu

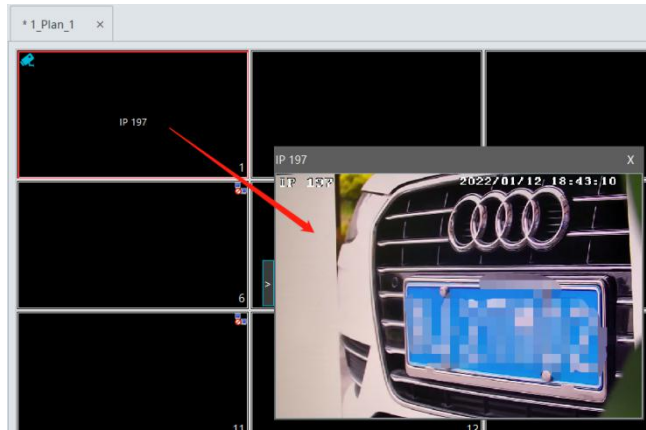


1. Screen mode: 1\4\9\16\25\36 screen mode is optional.
2. Open Window: Click [Enable PIP] and then drag on a window to open a small window on it. Click [Disable PIP] to stop opening window. The small window can be dragged to anywhere on the big window.

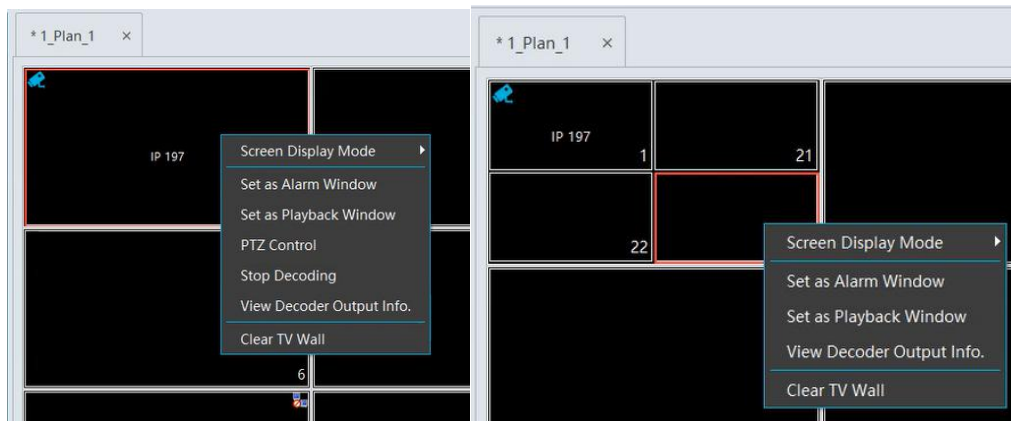


3. Click [Hide ID] to hide the window number; click [Display ID] to display the window number.

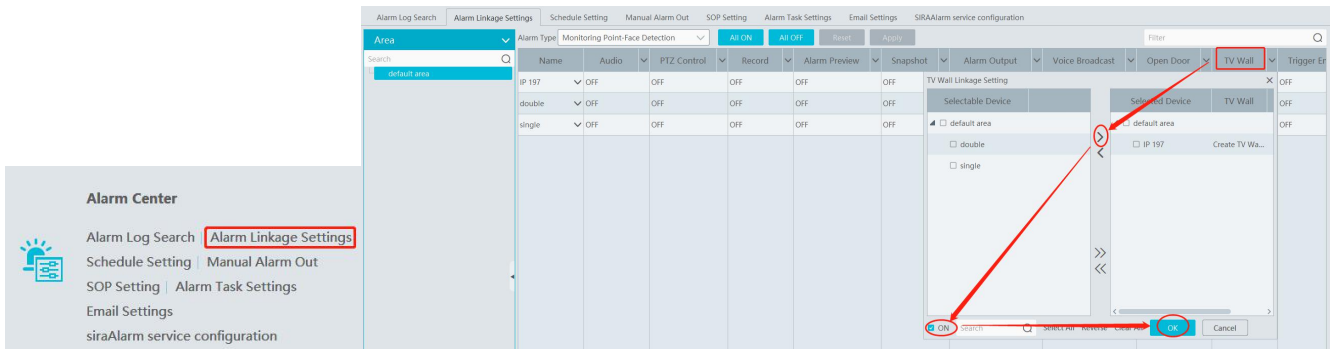
4. Click [Save] to save the current plan.
5. Click [Save as] to save it as another plan.
6. Renumber: Click it to renumber the window of the plan from left to right and top to bottom.
7. Select a window assigned a monitoring point and then press the right mouse and drag to another window to copy monitoring point to it.
8. Double click a window to play the video.



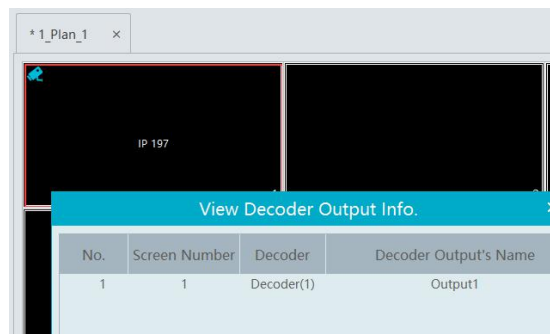
◆ Right-click Menu



1. Screen mode: 1\4\9\16\25\36 screen mode is optional.
2. Zoom in/out: if the current screen mode is multi-screen display mode, click “Zoom In” to zoom in the current image. Click “Zoom Out” menu again to restore to the previous status.
3. Save as Alarm Window: click it to save the current window as an alarm window. The alarm linkage image will be displayed in this window. Go to Home → Alarm Center → Alarm Linkage (or Home → Alarm System → Alarm Linkage) interface. Select TV wall linkage item to set alarm linkage.

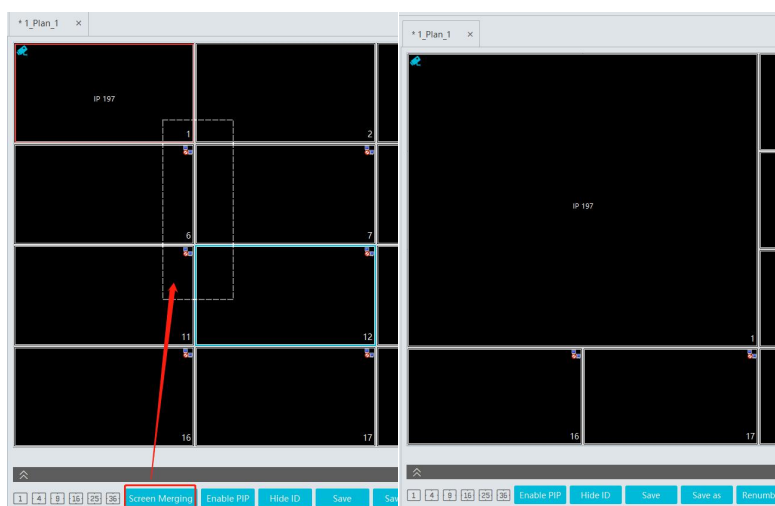


4. Set as Playback Window: when decoding images, click this menu to play the records of the current channel (the record source is the current record source).
5. PTZ Control: click this menu to prompt a PTZ control panel of the current decoding window. Direction control, zooming and focusing, Iris control, speed, preset, track and cruise calling can be operated through this control panel.
6. Stop Decoding: click it to stop decoding the current image.
7. View Decoder: view the information of the decoder.



8. Clear TV Wall: click it to clear the decoding configuration of the current output.
- ◆ Screen Merging or Splitting

Drag the mouse to select multi-window and then click [Merge] to merge these windows.




Select the merged window and click [Split] to restore the window to its previous status.



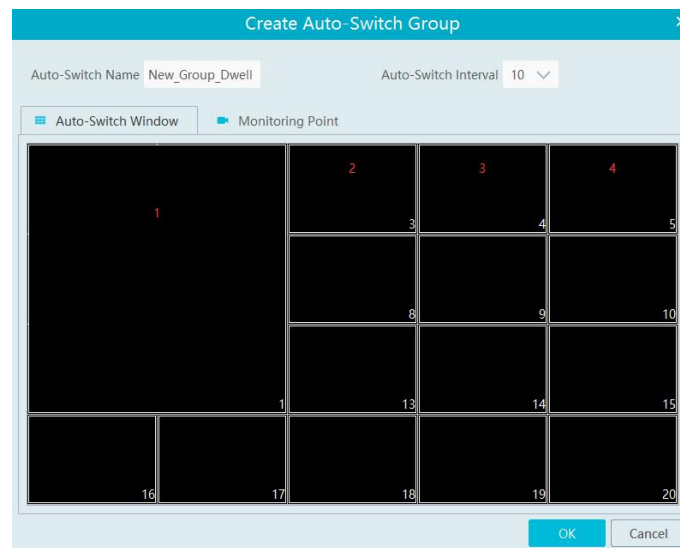
◆ Auto-Switch Group

1. Create Auto-Switch Group

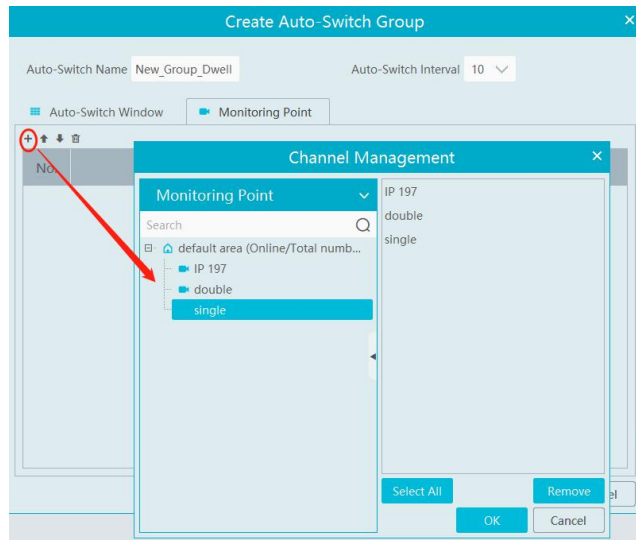
- ① Click Auto-Switch Group under the screen and then click  to create auto-switch group.



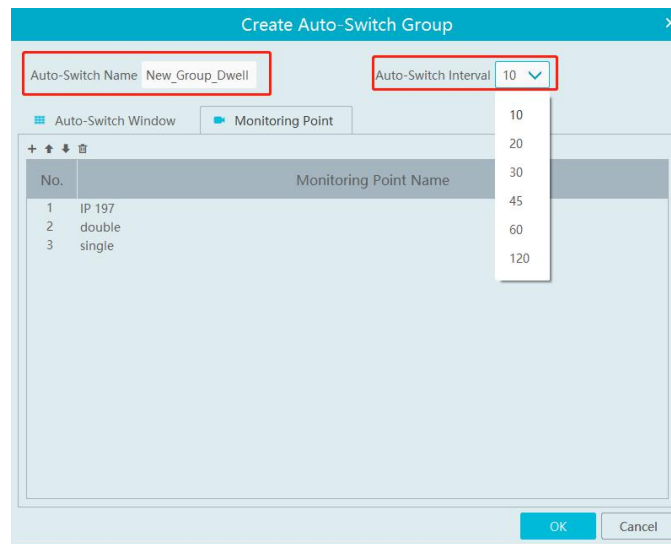
- ② Select “Auto-Switch Window” to select the window group.



- ③ Click “Monitoring Point” to select the auto-switch channel group.





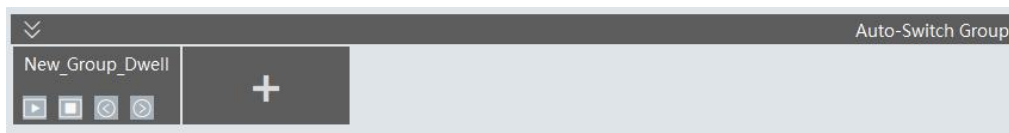
- ④ Enter auto-switch name and dwell time.



2. Execute auto-switch

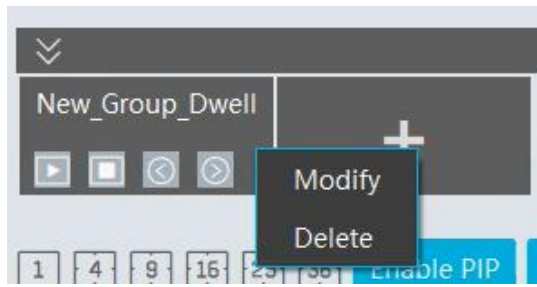


Click  to execute auto-switch. The specified channel images will be played in the specified windows in sequence.
 Click  to stop playing the current auto-switch.



3. Modify or delete auto-switch

Right click the auto-switch name and then select Modify or Delete to modify or delete the auto-switch.

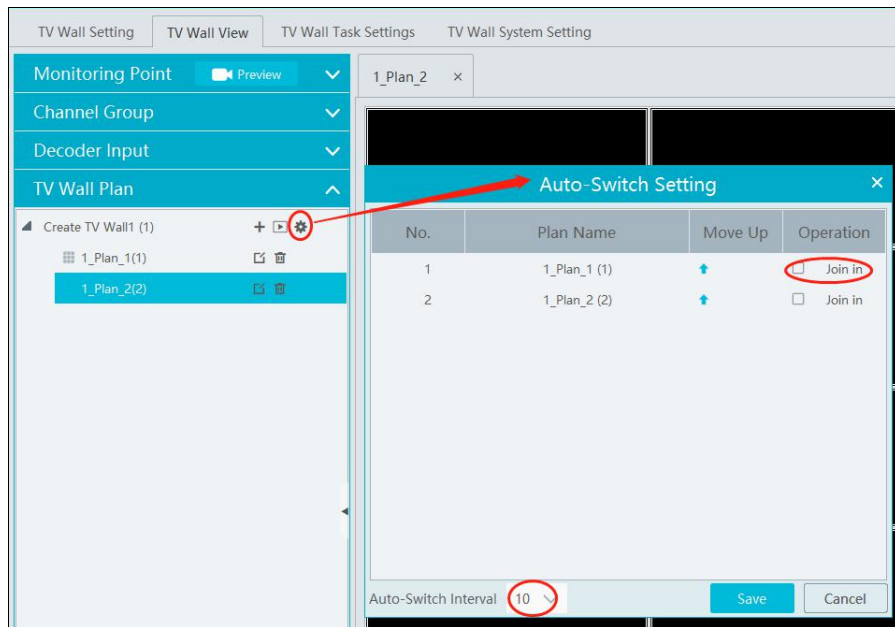


Note: If there are overlapped auto-switch window in a plan, the auto-switch groups will not be executed at the same time.

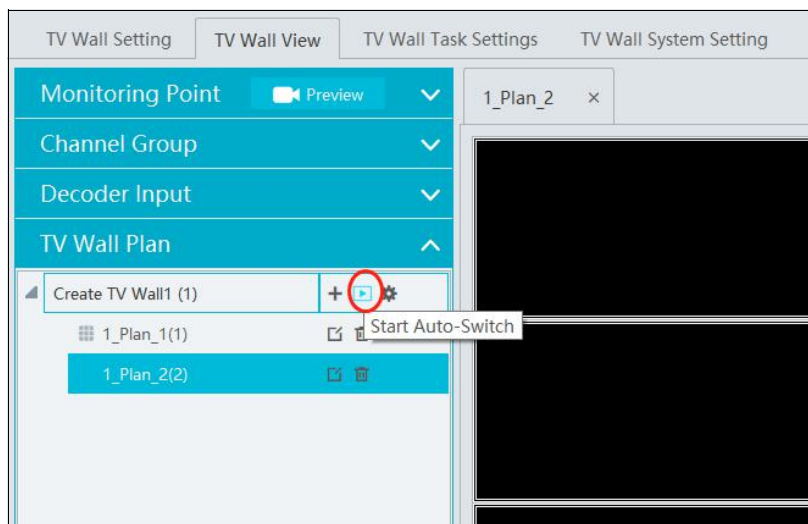
◆ Auto-switch plan


1. Create auto-switch plan

Click  behind the TV wall plan name to set the auto-switch. Click “Join in” to select the plan. Then set dwell time and click [OK].




2. Start/stop auto-switch



Click  behind the TV wall name to start auto-switch plan. Click the Stop button to stop the auto-switch.

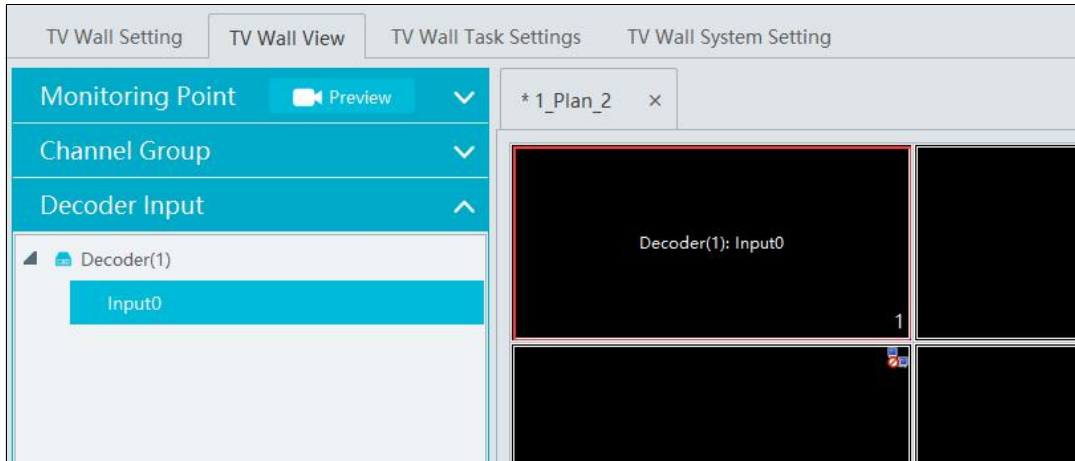
3. Modify auto-switch plan

Click  again to modify the auto-switch plan.

Note: If the current auto-switch plan needs to modify, please stop it first.




1.3.3 Decoder Input

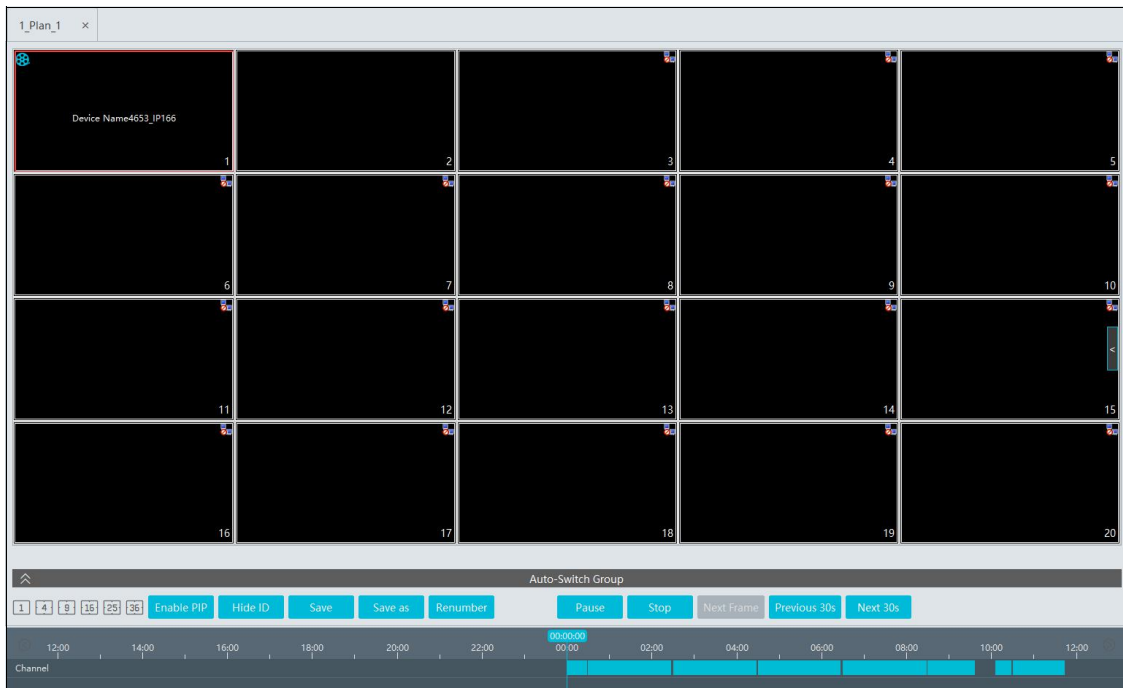
Go to Home→TV Wall Management→Decoding on TV Wall→Decoder Input. Drag an input to a window to execute decoding.



1.3.4 Playback

◆ Playback on TV Wall

Click “Preview” on the left panel. Then this button becomes “Record”. Click  at the bottom of the left panel to extend the filtering condition. Click / to get records from device or storage server, check the alarm events and then drag the cameras (or channels) to a window to search and play the records.



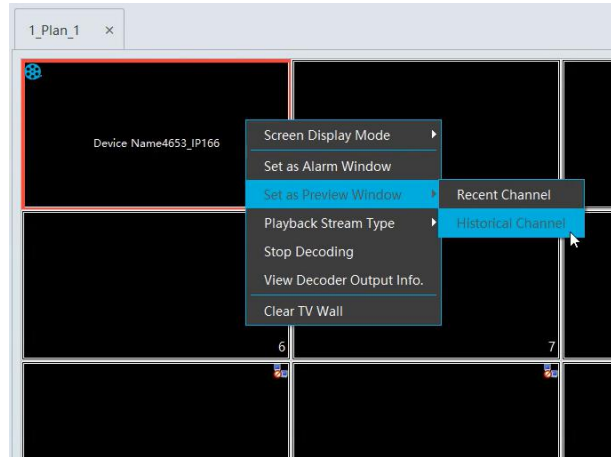
Of course, the specified time and event types can be set to search the specified records.

◆ Playing control



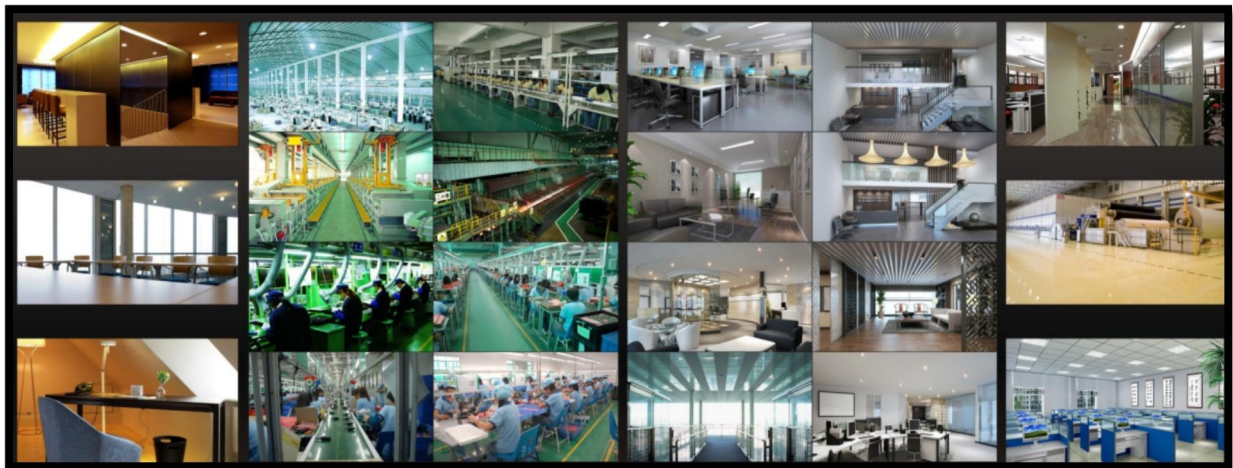
During playback, the record can be controlled by the above buttons.

◆ **Right-click menu**




1. Screen mode: 1\4\9\16\25\36 screen mode is optional
2. Zoom in
3. Save as an alarm window
4. Save as preview window: the current channel or the historical channel is optional.
5. Playback stream type: main stream or sub stream is selectable.
6. Stop decoding
7. View decoder information
8. Clear TV wall

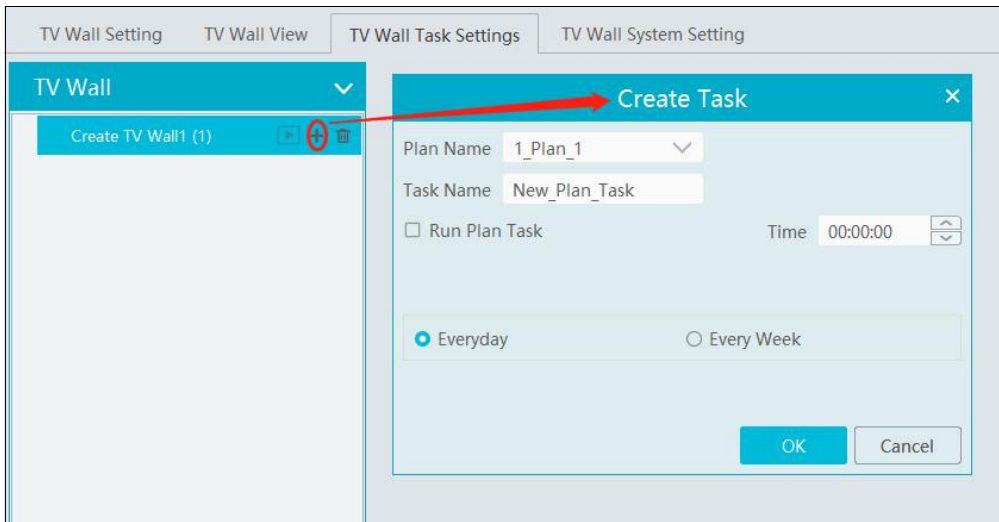
The following picture is an example of TV Wall.




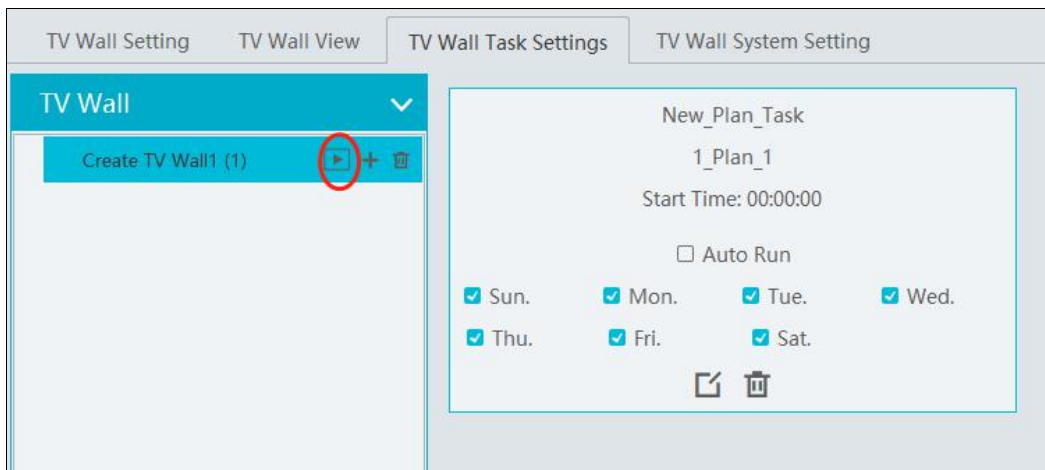
1.3.5 Task Setting of TV Wall

Go to Home→TV Wall Management→Task Setting. Click  behind the TV wall name.

Select plan name, enter task name, set run time and enable plan task.

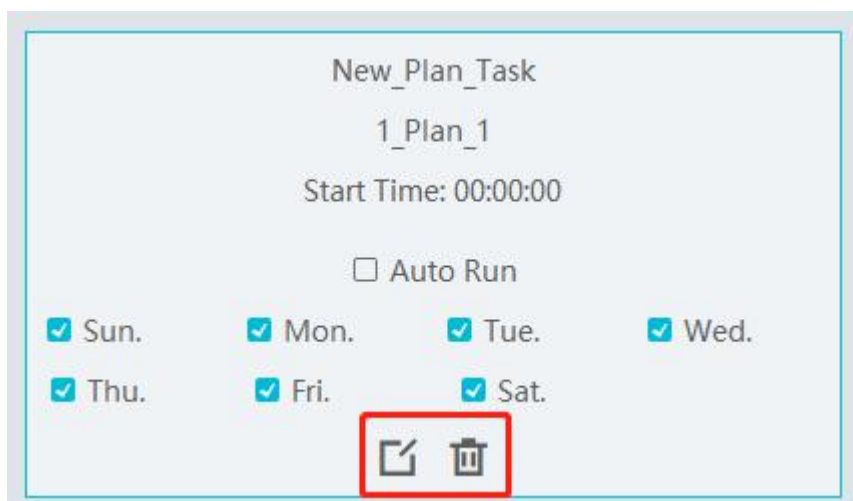




Click  to start the task. Click the Stop button to stop this task.



Modify or delete task

Double click the TV wall name and then the tasks will be displayed on the right window.



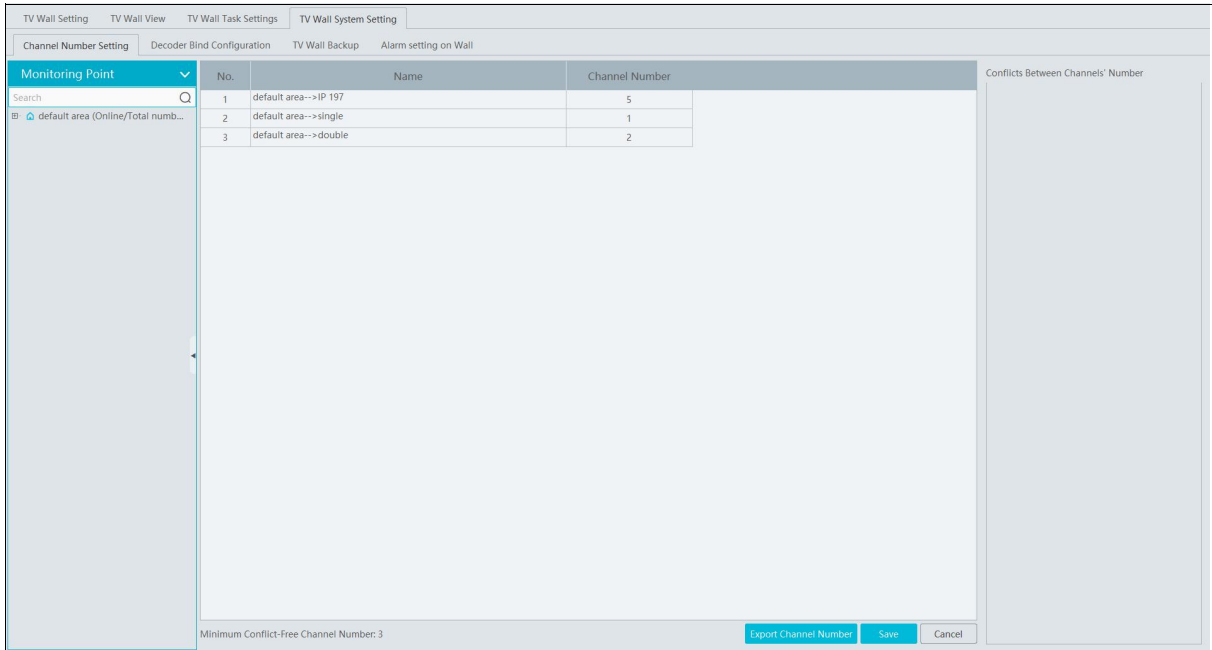
Click  or  to modify or delete the task.

1.3.6 TV Wall System Configuration

Go to Home→TV Wall Management→TV Wall System Setting interface as shown below. In this interface, the channel number can be set up.

➤ Channel Number Settings

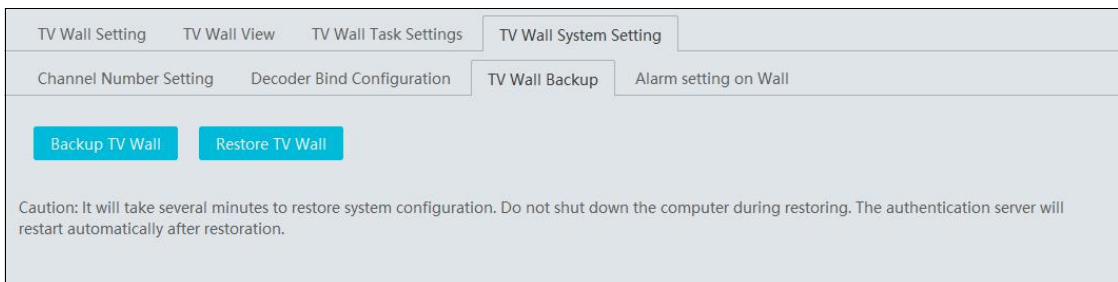
Channel number configuration: set the channel number and make the channel convenient to be controlled by the network keyboard controller. Users can export these channel number in this interface.



➤ TV Wall Backup

When importing the former system configuration files to the new version, the TV wall configuration file will not be imported together. So you need to import the TV wall configuration file separately.

Click [Backup TV Wall] in the last version to back up the TV wall configuration files. Then click [Restore TV wall] in the new version to restore it.



➤ TV Wall Alarm Linkage Settings

The alarm closing time can be set. If “Automatically closing alarm on Wall” is selected, you can set the time that TV wall alarm automatically turns off. The alarm preview window will automatically turn off the alarm linkage video according to the set time until next alarm is triggered. If not selected, you need to close the alarm preview window manually.